

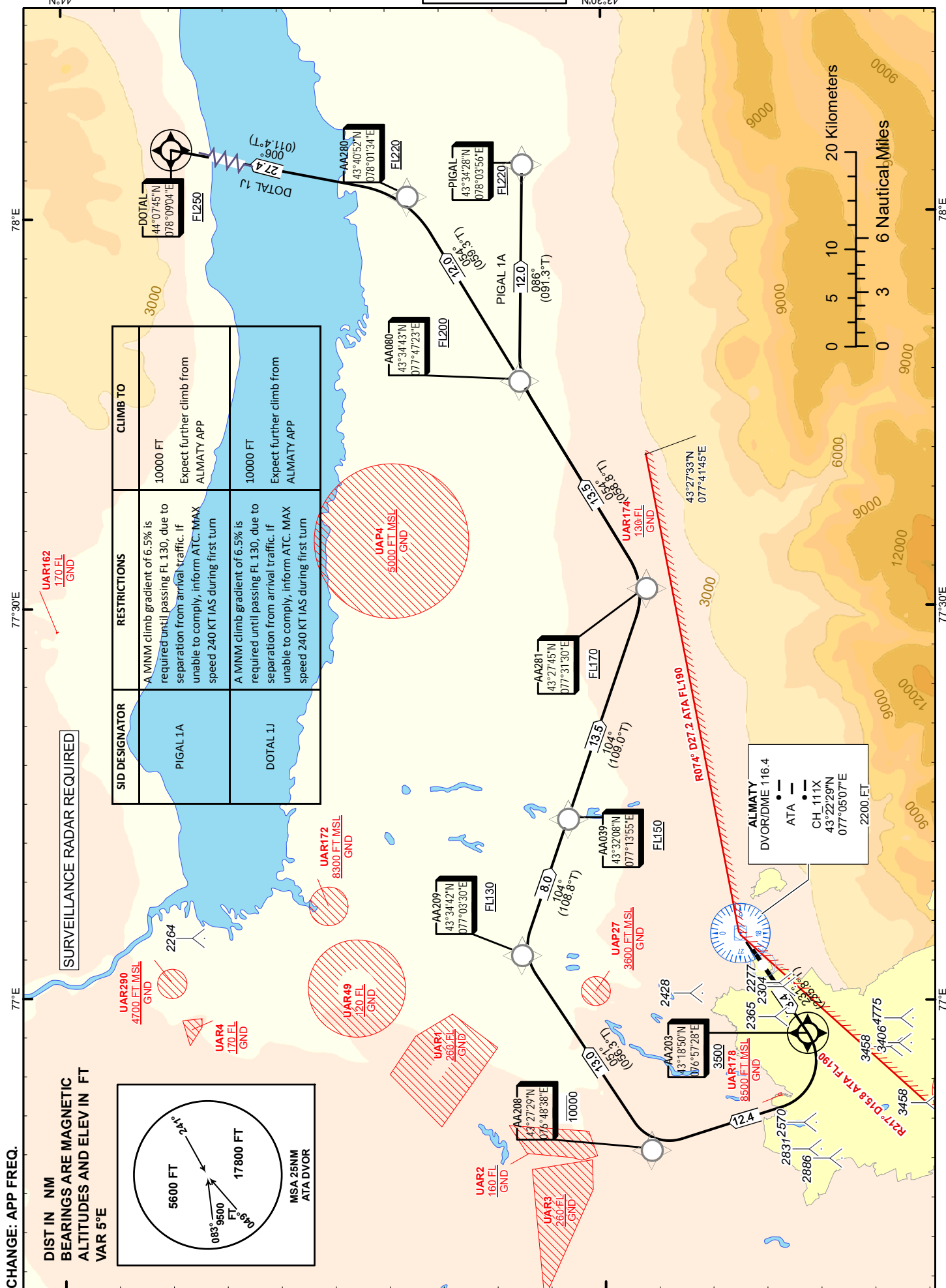
STANDARD DEPARTURE  
CHART - INSTRUMENT  
(SID) - ICAO

TRANSITION ALTITUDE  
10000 FT

ALMATY APPROACH 118.3  
ALMATY RADAR 126.8  
ALMATY TOWER 119.4  
ALMATY ATIS (EN) 129.8  
ALMATY ATIS (RU) 135.1

DOTAL 1J, PIGAL 1A  
(RNAV 1 SID BASED ON GNSS)

ALMATY  
RWY 23L/23R



**TABULAR DESCRIPTION**

DOTAL 1J RWY 23L /23R											
Serial Number	Path Descriptor	Waypoint Identifier	Fly - over	Course °M(°T)	Magnetic Variation(°)	Distance NM	Turn Direction	Altitude FT	Speed KT	VPA (°)	Navigation Specification
10	CF	AA203	Y	231(235.8)	5.12	3.4	-	+3500	-240	3.7	RNAV1
20	DF	AA208	-		5.12	12.4	R	-10000	-	3.7	RNAV1
30	TF	AA209	-	51(56.3)	5.12	13	R	+FL130	-	3.7	RNAV1
40	TF	AA039	-	104(108.8)	5.12	8	R	+FL150	-	3.7	RNAV1
50	TF	AA281	-	104(109.0)	5.12	13.5	-	+FL170	-	1.9	RNAV1
60	TF	AA080	-	54(58.8)	5.12	13.5	L	+FL200	-	1.9	RNAV1
70	TF	AA280	-	54(59.3)	5.12	12	-	+FL220	-	1.9	RNAV1
80	TF	DOTAL	-	6(11.4)	5.12	27.4	L	+FL250	-	1.9	RNAV1

**WAYPOINT LIST**

DOTAL 1J RWY 23L /23R		
Waypoint Identifier	Coordinates	
DER	432044.98N	0770119.63E
AA203	431849.98N	0765727.89E
AA208	432728.82N	0764838.42E
AA209	433442.40N	0770329.73E
AA039	433208.01N	0771354.79E
AA281	432744.74N	0773130.04E
AA080	433443.05N	0774723.42E
AA280	434052.03N	0780134.43E
DOTAL	440745.00N	0780904.00E

**WAYPOINT LIST**

PIGAL 1A RWY 23L /23R		
Waypoint Identifier	Coordinates	
DER	432044.98N	0770119.63E
AA203	431849.98N	0765727.89E
AA208	432728.82N	0764838.42E
AA209	433442.40N	0770329.73E
AA039	433208.01N	0771354.79E
AA281	432744.74N	0773130.04E
AA080	433443.05N	0774723.42E
PIGAL	433428.00N	0780356.00E

**TABULAR DESCRIPTION**

PIGAL 1A RWY 23L /23R											
Serial Number	Path Descriptor	Waypoint Identifier	Fly - over	Course °M(°T)	Magnetic Variation(°)	Distance NM	Turn Direction	Altitude FT	Speed KT	VPA (°)	Navigation Specification
10	CF	AA203	Y	231(235.8)	5.12	3.4	-	+3500	-240	3.7	RNAV1
20	DF	AA208	-		5.12	12.4	R	-10000	-	3.7	RNAV1
30	TF	AA209	-	51(56.3)	5.12	13	R	+FL130	-	3.7	RNAV1
40	TF	AA039	-	104(108.8)	5.12	8	R	+FL150	-	3.7	RNAV1
50	TF	AA281	-	104(109.0)	5.12	13.5	-	+FL170	-	1.9	RNAV1
60	TF	AA080	-	54(58.8)	5.12	13.5	L	+FL200	-	1.9	RNAV1
70	TF	PIGAL	-	86(91.3)	5.12	12	R	+FL220	-	1.9	RNAV1